

# SEMINARIO EPISTEMOLOGÍA HISTÓRICA

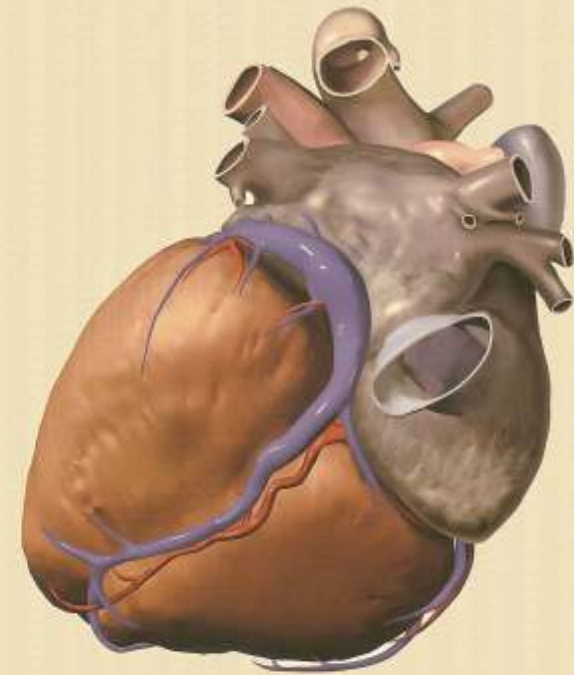
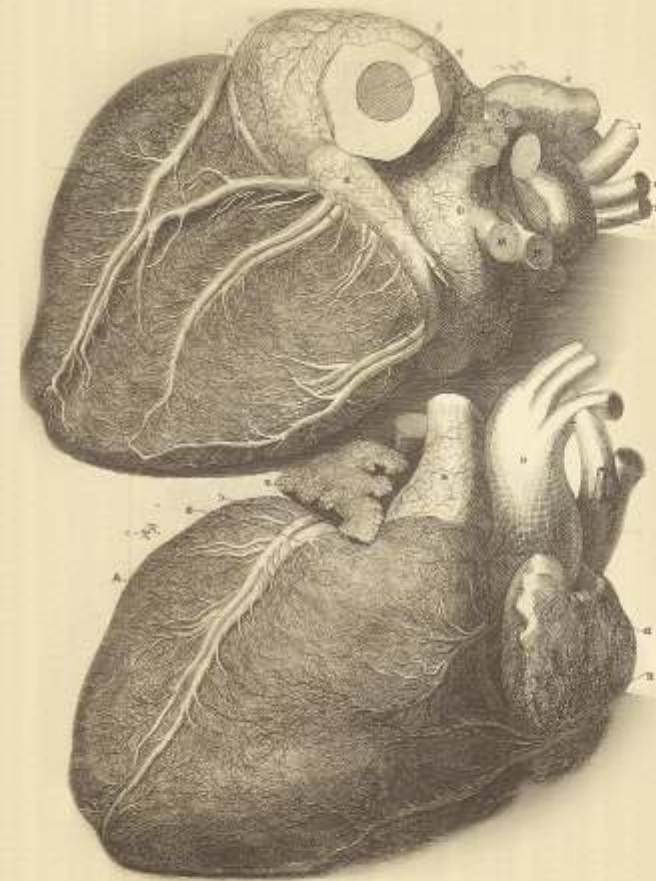
**22 de noviembre a las 17.30hs:**  
**sala Gomez Moreno (2C10)**

Centro de Ciencias Humanas y Sociales  
C/Albasanz 26-28 | 28037 Madrid

## Claudia Wassmann

Max-Planck-Institut for Human Development  
History of Emotions:

“Emotion into Science.  
How Our Modern Ideas about Emotion  
Were Created in the Nineteenth Century.”



CSIC



Comunidad de Madrid  
www.madrid.org



IFS